

BETING ACEH ISLAND

Coordinate : 02°06'00,85"N & 101°34'30,44"E

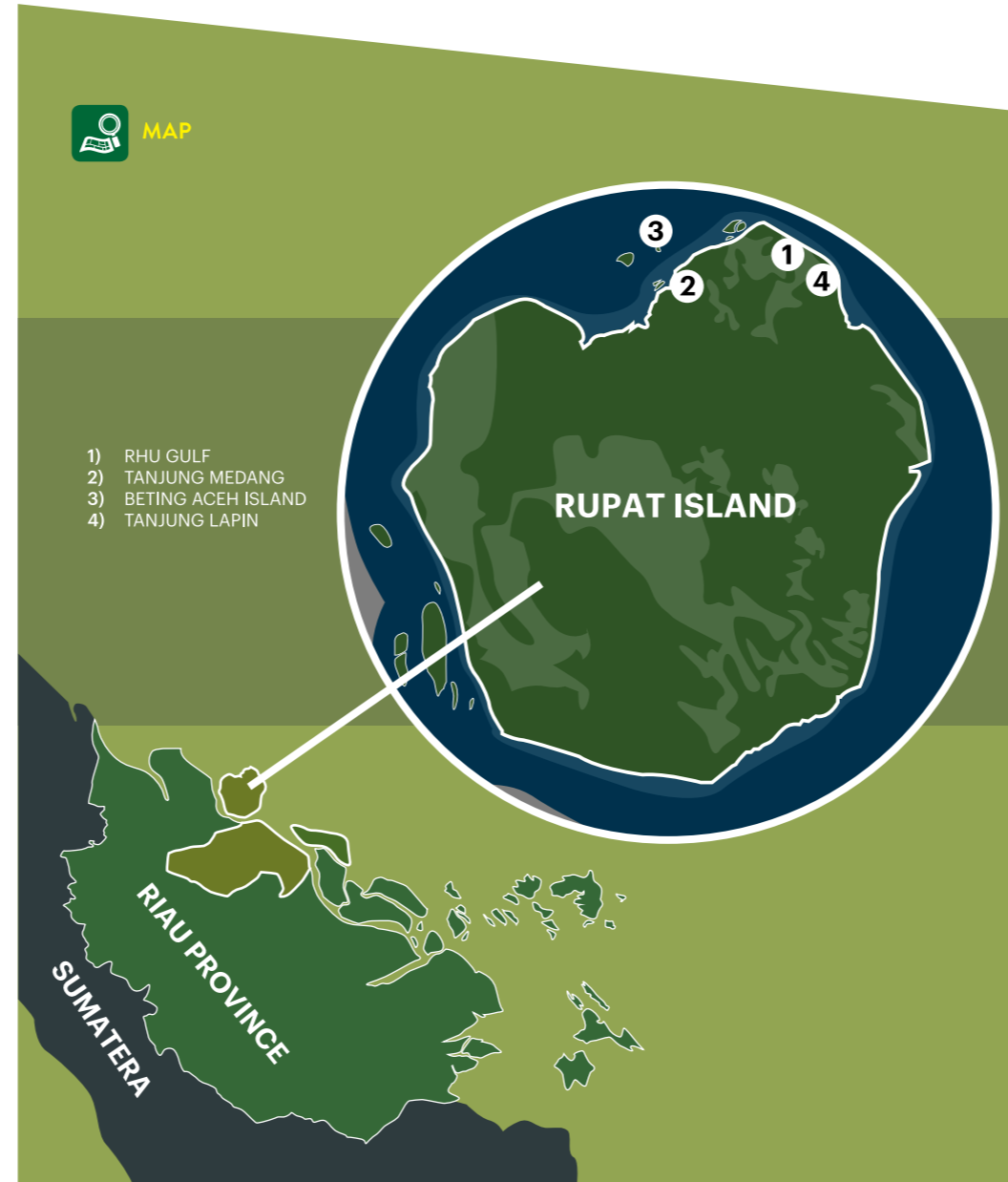
- 1) Location Width : 1 Ha
- 2) Owner : Local Government
- 3) Tourism Business Opportunities (including the investment code of the Standard Classification of Indonesian Business Fields for Tourism):
 - a. Villa (55194)
 - b. Marine dock (93243)
 - c. Water Sport (93249)
- 4) Available cooperation
The Investors are encourage to invest in collaboration with the Local Government through the following cooperation:
 - a. Build, Operate and Transfer (BOT)
 - b. Joint Venture



TANJUNG LAPIN

Coordinate : 02°05'29,22"N & 101°42'31,52"E

- 1) Location Width : 2 Ha
- 2) Owner : Local Government
- 3) Tourism Business Opportunities (including the investment code of the Standard Classification of Indonesian Business Fields for Tourism):
 - Star hotel (5511), Restaurant (56101), Café (56303), Spa (96122), Villa (55194), Marine dock (93243), Water Sport (93249), Sport Centre (93118), Swimming Pool (93114)
- 4) Available cooperation
The Investors are encourage to invest in collaboration with the Local Government through the following cooperation:
 - a. Build, Operate and Transfer (BOT)
 - b. Joint Venture



- 1) RHU GULF
- 2) TANJUNG MEDANG
- 3) BETING ACEH ISLAND
- 4) TANJUNG LAPIN

ADDRESS

Deputy for Tourism Destination and Tourism Industry Development

Sapta Pesona Building, 4th Floor
Merdeka Barat No. 17
Jakarta Pusat 10110
Indonesia
www.kemenpar.go.id
www.indonesia-tourism-investment.com

Contact Us :
Indonesia.tourisminvestment@kemenpar.go.id
Indonesia.tourisminvestment@gmail.com
T : +62 21 3838 040
F : +62 21 3867 588

RUPAT ISLAND
BENGLKALIS REGENCY
RIAU PROVINCE

INVITATION TO INVEST IN TOURISM
BASED COMMUNITY DEVELOPMENT AT :

LOCATION
Sumatera
Java

Indonesia Tourism Invitation



PRESENTING: RUPAT ISLAND, BENGKALIS REGENCY

OUR MISSION IS TO:

- 1) Recognize and promote the locations of great natural beauty and social diversity as tourist destinations;
- 2) Inform international and domestic investors, developers, operators, and visitors about development potentials in these areas;
- 3) Guide investors towards the comprehensive investment services offered by the Ministry's partners, including the Indonesia Investment Coordinating Board.



1. ABOUT RUPAT ISLAND, BENGKALIS REGENCY



LOCATION

Capital City : Bengkulu City
 Time Zone : WIB (UTC+7)
 Coordinate : 1°28'N 102°7'E
 Area Width : ± 7.793,93 Km²
 Borders : North side : Malacca Strait
 South side : Siak Regency
 East side : Meranti Islands Regency and Karimun Regency
 West side : Dumai City, Rokan Hilir Regency and Rokan Hulu Regency
 Air Temperature : 26 °C – 32 °C
 Relative Humidity : 82-85%



DEMOGRAPHICS

Population : 498.335 (2010)
 Density : 32,5 Peoples/km²



ECONOMY

Bengkalis Regency largest income is from petroleum that became the largest source of its Regional Budget along with gas. Bengkulu Regency has a very strategic location, because it passed by the international shipping lanes leading to the Strait of Malacca. Bengkulu also included on the program of Indonesia Malaysia Singapore Growth Triangle (IMS-GT) and Indonesia Malaysia Thailand Growth Triangle (IMT-GT).



INFRASTRUCTURE

Transportation

Pakning Rivers District and Duri District are connected by a highway that connects to Pekanbaru City, Riau provincial capital and other cities in Sumatra Island. Sea transport is served by middle-class cargo ships and passenger ships ferry with a capacity of 300 passengers.
 For air transport, there is no public airport available on the regency, the only airport is a pioneer airport named Sei Selari Airport which is located on the Pakning River District, which is owned by PT. Pertamina UP II Dumai, the national petroleum company for their operational purpose.

Telecommunication

PT. Pos Indonesia as the national mailing service company has reached all parts in Bengkulu, as it also comes with a telephone service to the Bengkulu City, Pakning River District and Duri District area. Currently the mobile phone can be served in Bengkulu City and Duri District.

Energy

To meet the demand for electricity, PT PLN supplying electricity to all districts in Bengkulu with the following capacities:

1. Bengkulu City 3.870 kW and Teluk Pambang District 100 kW.
2. Pakning River District 1.090 kW and Tenggayun District 100 kW.
3. Duri District 10.830 kW.
4. Batu Panjang District 420 kW, Pangkalan Nyirih 40 kW and Teluk Lecah, Titi Akar and Medang District 100 kW.

5. Tanjung Samak District 300 kW.
6. Teluk Belitug District 200 kW and Bandul District 100 kW.

Water

Clean water in Bengkulu Regency supplied by public water utilities to the Bengkulu City and Duri District area, whilst for the other cities is currently under development.



2. TOURISM FACTS



RUPAT ISLAND

Rupat Island is an island in Bengkulu Regency. This island has an area of approximately 1.500 Km² and is inhabited by about 47.000 inhabitants. Rupat consists of two districts, namely Rupat District and North Rupat District. Rupat is one of the outer islands of Indonesia that is bordering with Malaysia. The island is shaped like a small mountain in the middle of the vast ocean, and has a very strategic position for dealing directly with the international waters, the Strait of Malacca.

Rupat has a very exotic beauty, and besides, the foreign ships that pass in the Malacca Strait can be directly docked to the island that has the longest white sand beach in Indonesia. Rupat Island white sand beach stretches ± 17 Km along the Teluk Rhu, Tanjung Punak (North Rupat District) until the Cingam River (Rupat District). The beach is about ±30 meters wide



ACCESSIBILITIES

The island can be reached from Pekanbaru City, Dumai City or Bengkulu City. The main line transport from and to the island is by sea. There is a fixed transportation schedule to the island, which is the crossing between Dumai City and Rupat District. Traveling from Dumai City to Rupat District can be reached within 20-30 minutes by Roro Ship, while departing from Bengkulu City in Bengkulu Island takes approximately 2 hours of travel.

when the tide is low and about ±7 meters wide at high tide. International event that was held in this island is to swim non-stop across the Strait of Malacca from Pasir Panjang area towards Port Dickson in Malaysia. There are many activities for tourists such as sunbathing, surfing, diving, fishing, and swimming.

3. REGIONAL TOURISM POLICY



TOURISM POSITION ON REGIONAL DEVELOPMENT

Rupat Island development as a tourist destination, was not only a regency scale development program, but also a province development program of Riau Province. It is based on the strategic development policy in the Bengkulu Regency and the Riau Province, hence various supporting facilities have been built, either by the Government of Bengkulu Regency and also Riau Province, such as access roads and harbour ferry crossings. Aside from being a leading tourist destination in the province, Rupat Island along with Dumai City and Duri City is planned to become one of the Triangle area for the new economic growth centres in the Riau Province.

Tourism has become one of the main priority sector for development by the local government. The government and the community have fully aware of the Bengkulu Regency natural beauty and it's potential for economic contribution through tourism development. They are welcoming every investors that are willing to cooperate not only on developing more tourism attraction and facilities but also to develop in all of tourism aspects of Bengkulu Regency.



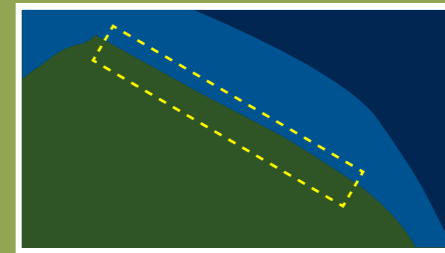
REGIONAL TOURISM DEVELOPMENT OBJECTIVE

The tourism development at Bengkulu Regency must be implemented in compliance with the following principles:

1. Community based tourism
Maintain the involvement of the local community and the stakeholders on every tourism development activities
2. Sustainable tourism
Continuous improvement and preservation of the environmental, cultural and community aspects of tourism development
3. Cultural preservation
Implement and integrate the local culture elements on all of the tourism development activities
4. Collaborative cooperation between stakeholders
Cooperate and accommodate all of the stakeholder's aspirations



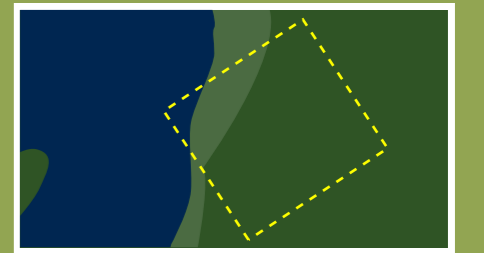
4. INVESTMENT OPPORTUNITIES



RHU GULF

Coordinate : 02°06'56,88"N & 101°40'17,19"E

- 1) Location Width : 10 Ha
- 2) Owner : Local Communities
- 3) Tourism Business Opportunities (including the investment code of the Standard Classification of Indonesian Business Fields for Tourism):
Star hotel (5511), Restaurant (56101), Café (56303), Spa (96122), Villa (55194), Marine dock (93243), Water Sport (93249), Sport Centre (93118), Swimming Pool (93114)
- 4) Available cooperation
The Investors are encourage to invest in collaboration with the Local Communities through the following cooperation:
a. Build, Operate and Transfer (BOT)
b. Joint Venture



TANJUNG MEDANG

Coordinate : 02°06'09,94"N & 101°37'10,58"E

- 1) Location Width : 50 Ha
- 2) Owner : Local Government
- 3) Tourism Business Opportunities (including the investment code of the Standard Classification of Indonesian Business Fields for Tourism):
Star hotel (5511), Restaurant (56101), Café (56303), Spa (96122), Villa (55194), Marine dock (93243), Sport Centre (93118), Swimming Pool (93114), Recreational Park (93232), Theme Park (93210)
- 4) Available cooperation
The Investors are encourage to invest in collaboration with the Local Government through the following cooperation:
a. Build, Operate and Transfer (BOT)
b. Joint Venture

Information : Potential Area
 Road