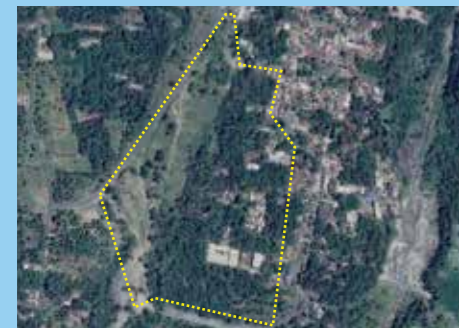


SUMBERARUM

1. Located at Sumber Arum Village, Moyudan District, Sleman Regency.
2. Location Coordinate : S 5 07°46'17.22" E110°13'26.97"
3. Location Width : ± 8 hectare
4. Owner : Local Village
5. Tourism Business Opportunities (including the investment code of the Standard Classification of Indonesian Business Fields for Tourism):
 - a. 1 unit of Three Star Hotel (5511) with 80 rooms.
 - Estimated required initial funds: IDR 44 Billion (Excluding land lease, license and permit fees)
 - b. 1 unit of Restaurant (56101)
 - Estimated required initial funds: IDR 5 Billion (Excluding land lease, license and permit fees)
 - c. 1 unit of Café (56303)
 - Estimated required initial funds: IDR 2.5 Billion (Excluding land lease, license and permit fees)
6. Available cooperation
The Investors are encourage to invest in collaboration with the land owner through the following cooperation:
 - a. Build, Operate and Transfer (BOT)
 - b. Joint Venture
 - c. Any agreeable cooperation form

- c. 2 units of Restaurant (56101)
 - Estimated required initial funds: IDR 5 Billion (Excluding land lease, license and permit fees)
- d. 2 units of Café (56303)
 - Estimated required initial funds: IDR 2.5 Billion (Excluding land lease, license and permit fees)



HARGOBINANGUN VILLAGE

1. Located at Hargobinangun Village, Pakem District, Sleman Regency.
2. Location Coordinate : S 07°37'17.23" E110°25'17.47"
3. Location Width : ± 15 hectare (land)
4. Owner : Local Village
5. Tourism Business Opportunities (including the investment code of the Standard Classification of Indonesian Business Fields for Tourism):
 - a. 1 unit of Two Star Hotel (5511) with 70 rooms.
 - Estimated required initial funds: IDR 24 Billion (Excluding land lease, license and permit fees)
 - b. 1 unit of Three Star Hotel (5511) with 80 rooms.
 - Estimated required initial funds: IDR 44 Billion (Excluding land lease, license and permit fees)

BATOK BOLU

1. Located at Samburoto Village, Kalasan District, Sleman Regency
2. Location Coordinate : S 07°43'57.57" E110°26'44.55"
3. Location Width : ± 5 hectare
4. Owner : Local Village
5. Tourism Business Opportunities (including the investment code of the Standard Classification of Indonesian Business Fields for Tourism):
 - a. 1 unit of Two Star Hotel (5511) with 70 rooms.
 - Estimated required initial funds: IDR 24 Billion (Excluding land lease, license and permit fees)
 - b. 1 unit of Restaurant (56101)
 - Estimated required initial funds: IDR 5 Billion (Excluding land lease, license and permit fees)
 - c. 1 unit of Café (56303)
 - Estimated required initial funds: IDR 2.5 Billion (Excluding land lease, license and permit fees)
6. Available cooperation
The Investors are encourage to invest in collaboration with the land owner through the following cooperation:
 - a. Build, Operate and Transfer (BOT)
 - b. Joint Venture
 - c. Any agreeable cooperation form



ABANG TEMPLE

1. Located at Jokotirto Village, Brebah District, Sleman Regency.
2. Location Coordinate : S 07°48'37.21" E110°28'07.26"
3. Location Width : ± 40 hectare (land)
4. Owner : Local Village
5. Tourism Business Opportunities (including the investment code of the Standard Classification of Indonesian Business Fields for Tourism):
 - a. 2 unit of Two Star Hotel (5511) with 70 rooms.
 - Estimated required initial funds: IDR 24 Billion (Excluding land lease, license and permit fees)
 - b. 2 unit of Three Star Hotel (5511) with 80 rooms.
 - Estimated required initial funds: IDR 44 Billion (Excluding land lease, license and permit fees)
 - c. 4 units of Restaurant (56101)
 - Estimated required initial funds: IDR 5 Billion (Excluding land lease, license and permit fees)
 - d. 4 units of Café (56303)
 - Estimated required initial funds: IDR 2.5 Billion (Excluding land lease, license and permit fees)
6. Available cooperation
The Investors are encourage to invest in collaboration with the land owner through the following cooperation:
 - a. Build, Operate and Transfer (BOT)
 - b. Joint Venture
 - c. Any agreeable cooperation form

6. INVESTMENT OPPORTUNITIES SUMMARY

Business Fields	Amount Needed	Required Funds Per Business Field	Total Required Fund Per Business Field Category
Restaurant	5	IDR 24 Billion	IDR 120 Billion
Cafe	5	IDR 44 Billion	IDR 220 Billion
Restaurant	10	IDR 5 Billion	IDR 50 Billion
Cafe	10	IDR 2.5 Billion	IDR 25 Billion

Total Required Fund in the Region (Excluding Land Lease, License and Permit) IDR 415 Billion

ADDRESS

Deputy for Tourism Destination and Industry Development

Sapta Pesona Building, 4th Floor
Jl. Merdeka Barat No. 17
Jakarta Pusat 10110
Indonesia
www.kemepar.go.id
www.indonesia-tourism-investment.com

Contact Us :
Indonesia.tourisminvestment@kemepar.go.id
Indonesia.tourisminvestment@gmail.com
T : +62 21 3838040

SLEMAN REGENCY

CENTRAL JAVA PROVINCE

AN INVITATION TO INVEST IN TOURISM DEVELOPMENT IN :

Indonesia Tourism Invitation



WELCOME TO THE REPUBLIC OF INDONESIA
THE LAND OF SMILES....
PRESENTING:
SLEMAN REGENCY, SPECIAL REGION OF YOGYAKARTA

OUR MISSIONS ARE:

- 1) Recognize and promote the locations of great natural beauty and social diversity as tourist destinations;
- 2) Inform international and domestic investors, developers, operators, and visitors about development potentials in these areas;
- 3) Guide investors towards the comprehensive investment services offered by the Ministry's partners, including the Indonesia Investment Coordinating Board.



1. ABOUT SLEMAN REGENCY,



GEOGRAPHY

Time Zone : WIB (UTC +7)
Coordinate : 7°34'51"S 107°15'03"E
Area Width : ± 574.82 km2
Borders :
North : Boyolali Regency (Central Java Province)
West : Kulon Progo Regency
South : Bantul Regency and Yogyakarta
East : Klaten Regency (Central Java Province)
Air Temperature : 21°C – 36°C
Relative Humidity : 37 – 100 %



DEMOGRAPHICS

Population : 901,400
Density : 1,600 Peoples/km²
Labour Force : 534,725
Ethnic Group : Javanese

Religion : Islam, Cristianity, Budhism, Catholic, Hinduism and Konghucu
Language : Indonesian (official), Java language (local)



BUSINESS ENVIRONMENT

The economic structure of Sleman Regency in 2014 was dominated by the manufacturing industry sector, which has contribute up to 13.90% of the total GRDP based on current prices; followed by construction sector with a contribution of 10.77%. The trade, hotel and restaurant is in third place with 9.95%; then followed by the education service by at 9.49 %; agriculture, forestry and fishery by 8.87%; information and communication 8.42% and other sector under 8%. The high performance of Trade, Hotel and Restaurant confirms the characteristics of Sleman Regency has a great chance to be developed as a city of services and tourism.

2. INFRASTRUCTURE

TRANSPORTATION

The transportation system in Sleman Regency consists of road transport. Land transportation infrastructure supported by the network of national, provincial and regency levels. Overall, the existing transportation infrastructure has reached almost all parts of Sleman Regency.

TELECOMMUNICATION

Communication technologies in Sleman Regency has been well implemented and have covered the entire province. Telex and facsimile are already applied to all of area in Sleman Regency, especially for activities of government and entrepreneurs. Telecommunication infrastructures are easy to get even in the urban and rural area.

ENERGY

In terms of electricity, Sleman Regency has shown a significance improvement. It can be seen from the increasing number of electricity production by State Electricity Company (PLN). Overall, the improvement of energy has shown a great promise of regional development, especially in rural and remote areas.

WATER

Most areas of Sleman Regency is flowed by rivers. The existence of the rivers in addition to water and other residence needs. Aside from these rivers, the hydrological situation in Sleman Regency is also determined by the presence of swamps, lakes, dams, reservoirs, springs and boreholes.

3. TOURISM FACTS



ATTRACTION

Sleman Regency has a number of attractive tourism destination. Ranging from natural tourist attraction, nature based tourist attraction and historical tourist attraction.

NATURAL TOURIST ATTRACTION

KALIURANG

Kaliurang is a tourist area in Sleman located on the slopes of Mount Merapi. This area is famous for its cool atmosphere. Many residents who vacation Kaliurang Yogyakarta when the holiday season arrives. There are several tourist spots in the area of Kaliurang. The most famous is the observation post of Mount Merapi. Here tourist can see the peak of Mount Merapi directly using binoculars. In addition there is also a playground and stage entertainment.

HISTORICAL TOURIST ATTRACTION

1. Prambanan Temple

Prambanan is widely known as a place wiata in Yogyakarta. Administratively travel Prambanan temple is located in the two provinces which Yogyakarta and Central Java Province. In the province included in Sleman. Places Prambanan is a travel form a relic temple Hinduism which was built in the 9th century Prambanan temple has been designated as a world heritage site by UNESCO. In addition to its fascinating history to be learned, Prambanan is also closely connected with a myth about Jonggrang and Bondowoso. Places in Sleman is arguably the most favorite travel for every day crowded with visitors.

2. Boko Temple

Boko temple is located not far from Prambanan. According to the myth that developed, Boko temple is the former royal Ratu Boko, who is the father of Jonggrang. Boko temple is in two hamlets namely Hamlet Dawung, Bokoharjo Village and Hamlet Sumberwatu, Sambireja village, Prambanan sub



district, Sleman, Yogyakarta. Sightseeing in Sleman Ratu Boko is being proposed World Heritage Sites.

3. Mouth Merapi Museum

Mount Merapi Museum was built in Harjobinangun village, Pakem, Sleman, Yogyakarta. This location is about 5 km from the Kaliurang area so that they are included in the slopes of Mount Merapi. Mount Merapi is the most active volcano in the world. Whenever erupted will cause a tremendous disaster for the people around Mount Merapi. Mount Merapi Museum was built as a medium of education for the community will be the technical aspects of volcanology to social and cultural issues from Mount Merapi.

4. Ramayana Ballet

Ramatana Ballet is performing in the form of dramatic art and dance that tells the story of Ramayana. Performing Arts Drama and Dance Ramayana held on the stage outdoor theater near Region Prambanan. If the weather does not support the show is held indoors Trimurti building. This show has become a tourist in



ACCESSIBILITIES

Sleman Regency is relatively easy to reach by both domestic and international tourist. The main entry is through Adi Sucipto International Airport in Yogyakarta City. From Adi Sucipto International Airport, tourist can reach Sleman Regency via land transportation, which takes around 60 minutes by car, though it depends on which destination that the tourists are going to visit, considering the area of the City.

4. REGIONAL TOURISM POLICY

TOURISM POSITION ON REGIONAL DEVELOPMENT

Tourism has become one of the main priority sector for development by the local government. The government and the community have fully aware of the Sleman Regency tourism resources and its potential for economic contribution through tourism development. They are welcoming investors that are willing to cooperate not only on developing more tourism attraction and facilities but also to develop in all of tourism aspects of Sleman Regency.

REGIONAL TOURISM DEVELOPMENT OBJECTIVE

The tourism development at Sleman Regency must be implemented in compliance with the following principles:

1. Community based tourism
Maintain the involvement of the local community and the stakeholders on every tourism development activities
2. Sustainable tourism
Continuous improvement and preservation of the environmental, cultural and community aspects of tourism development
3. Cultural preservation
Implement and integrate the local culture elements on all of the tourism development activities
4. Collaborative cooperation between stakeholders
Cooperate and accommodate all of the stakeholder's aspirations

5. INVESTMENT OPPORTUNITIES



SENDANGADI VILLAGE



SUMBERARUM

SENDANGADI VILLAGE

1. Located at Sendangadi Village, Melati District, Sleman Regency.
2. Location Coordinate : 5 07°44'12.19" E 110°21'34.82"
3. Location Width : ± 12 hectare (land)
4. Owner : Local Village
5. Tourism Business Opportunities (including the investment code of the Standard Classification of Indonesian Business Fields for Tourism):
 - a. 1 unit of Two Star Hotel (5511) with 70 rooms.
 - Estimated required initial funds: IDR 24 Billion (Excluding land lease, license and permit fees)
 - b. 1 unit of Three Star Hotel (5511) with 80 rooms.
 - Estimated required initial funds: IDR 44 Billion (Excluding land lease, license and permit fees)
 - c. 2 units of Restaurant (56101)
 - Estimated required initial funds: IDR 5 Billion (Excluding land lease, license and permit fees)
 - d. 2 units of Café (56303)
 - Estimated required initial funds: IDR 2.5 Billion (Excluding land lease, license and permit fees)
6. Available cooperation
The Investors are encourage to invest in collaboration with the land owner through the following cooperation:
 - a. Build, Operate and Transfer (BOT)
 - b. Joint Venture
 - c. Any agreeable cooperation form